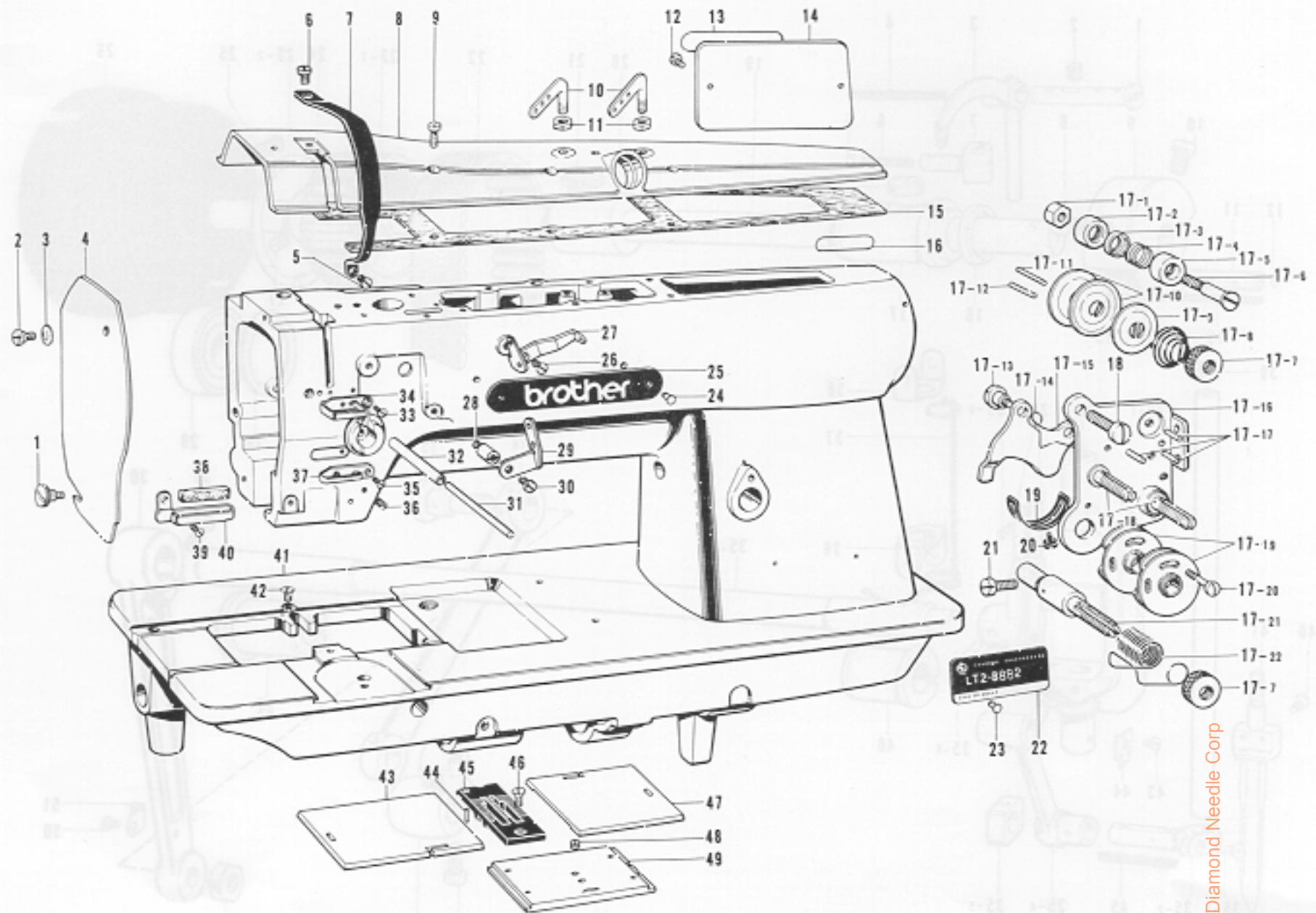


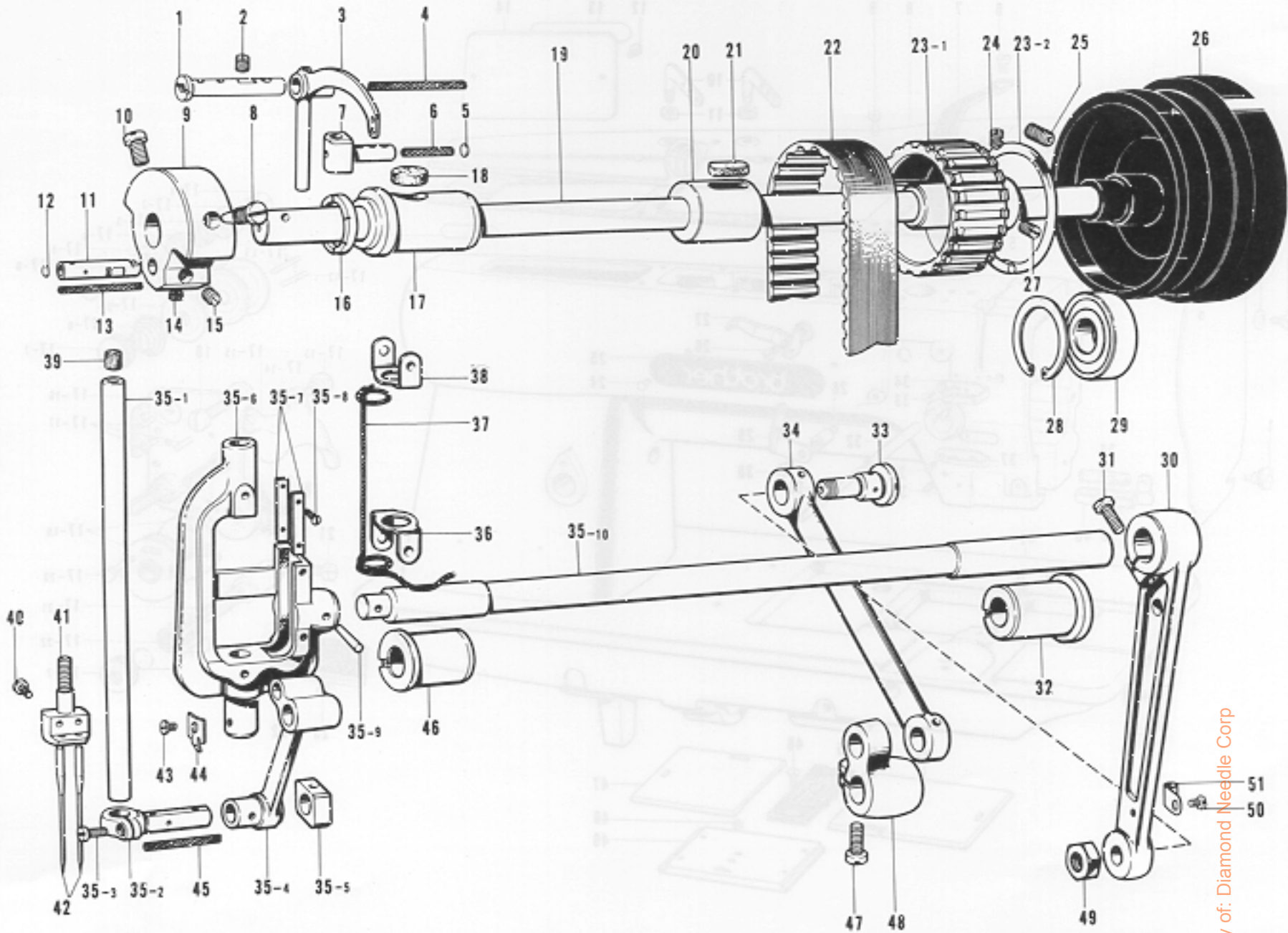
A. Machine Body and Threading



Ref. No.	Name of Parts	Q'ty	Parts No.	Assembly No.	Ref. No.	Name of Parts	Q'ty	Parts No.	Assembly No.
A- 1	Screw 3.57	1	129984-0-02		A-17-20	Screw 2.38	1	144682-0-01	
A- 2	Screw 3.57	1	153112-0-01		A-17-21	Tension Stud	1	144680-0-01	A-17
A- 3	Spring Washer	1	146598-0-01		A-17-22	Thread Take-up Spring	1	155491-0-01	55490-0-01
A- 4	Face Plate	1	156486-0-01		A-18	Screw 4.37 x 10	1	009681-0-14	
A- 5	Screw 3.57	1	108960-0-04		A-19	Stopper	1	112709-0-01	
A- 6	Screw 4.76 x 8	1	009710-8-12		A-20	Screw 3.57 x 6	1	009670-6-12	
A- 7	Thread Take-up Cover	1	155439-0-01		A-21	Screw 3.57	1	100064-0-02	
A- 8	Top Cover	1	153876-0-02		A-22	Model Plate 882	1		
A- 9	Screw 4.37 x 12	7	009681-2-14		A-23	Pin	2		
A-10	Top Cover Thread Guide	2	140527-0-01		A-24	Pin	2		
A-11	Nut 5.95	2	150553-0-03		A-25	Name Plate	1		
A-12	Screw 5.95	2	009670-6-12		A-26	Screw 3.57	1	108960-0-04	
A-13	Name Plate	1			A-27	Thread Guide F1	1	155493-0-01	
A-14	Rear Cover	1	112566-0-03		A-28	Stud (S)	1	149853-0-01	
A-15	Packing	1	150989-0-00		A-29	Thread Guide F2	1	155494-0-01	
A-16	Parts Book Number Plate	1			A-30	Screw 4.76 x 8	1	009710-8-13	
A-17- 1	Nut 3.57	2	021670-1-02		A-31	Tension Release Shaft	1	144823-0-01	
A-17- 2	Thread Guide Bracket	2	144687-0-01		A-32	Pipe	1	112714-0-00	
A-17- 3	Thread Guide Disc	2	144686-0-01		A-33	Screw 3.57	1	108960-0-04	
A-17- 4	Thread Guide Spring	2	144688-0-01		A-34	Arm Thread Guide (Upper)	1	108266-0-01	
A-17- 5	Cap	2	144685-0-01		A-35	Screw 3.57	1	108960-0-04	
A-17- 6	Screw	2	144689-0-01		A-36	Screw 4.37	2	151602-0-01	
A-17- 7	Tension Control Nut	3	108265-0-01		A-37	Arm Thread Guide (Center)	1	112658-0-01	
A-17- 8	Tension Spring	2	155492-0-01		A-38	Felt	1	114941-0-01	
A-17- 9	Presser for Tension Disc	2	100134-0-01		A-39	Screw 3.57	1	108960-0-04	
A-17-10	Tension Disc	4	145446-0-01		A-40	Arm Thread Guide (Lower)	1	112715-0-01	
A-17-11	Pin	1	144704-0-01	A-17	A-41	Arm Bed	1		
A-17-12	Pin	1	144703-0-01	Upper Tension	A-42	Screw 3.57	1	112751-0-02	
A-17-13	Screw 3.57	2	112712-0-01	Control	A-43	Slide Plate (Left)	1	112606-0-01	
A-17-14	Spring	2	118320-0-01	Assembly	A-44	Pin	1	113386-0-00	
A-17-15	Tension Release Plate	1	144683-0-01	155490-0-01	A-45	Needle Plate 1/4 inch	1	117367-0-01	
A-17-16	Upper Thread Tension Plate	1			A-46	Screw 4.37	1	100032-0-03	
A-17-17	Pin	3			A-47	Slide Plate (Right)	1	112607-0-01	
A-17-18	Tension Stud	2			A-48	Screw 5.16	1	116010-0-01	
A-17-19	Spring Guide	2	108254-0-01		A-49	Slide Plate (Front) Assembly	1	112610-0-01	

From the library of: Diamond Needle Corp

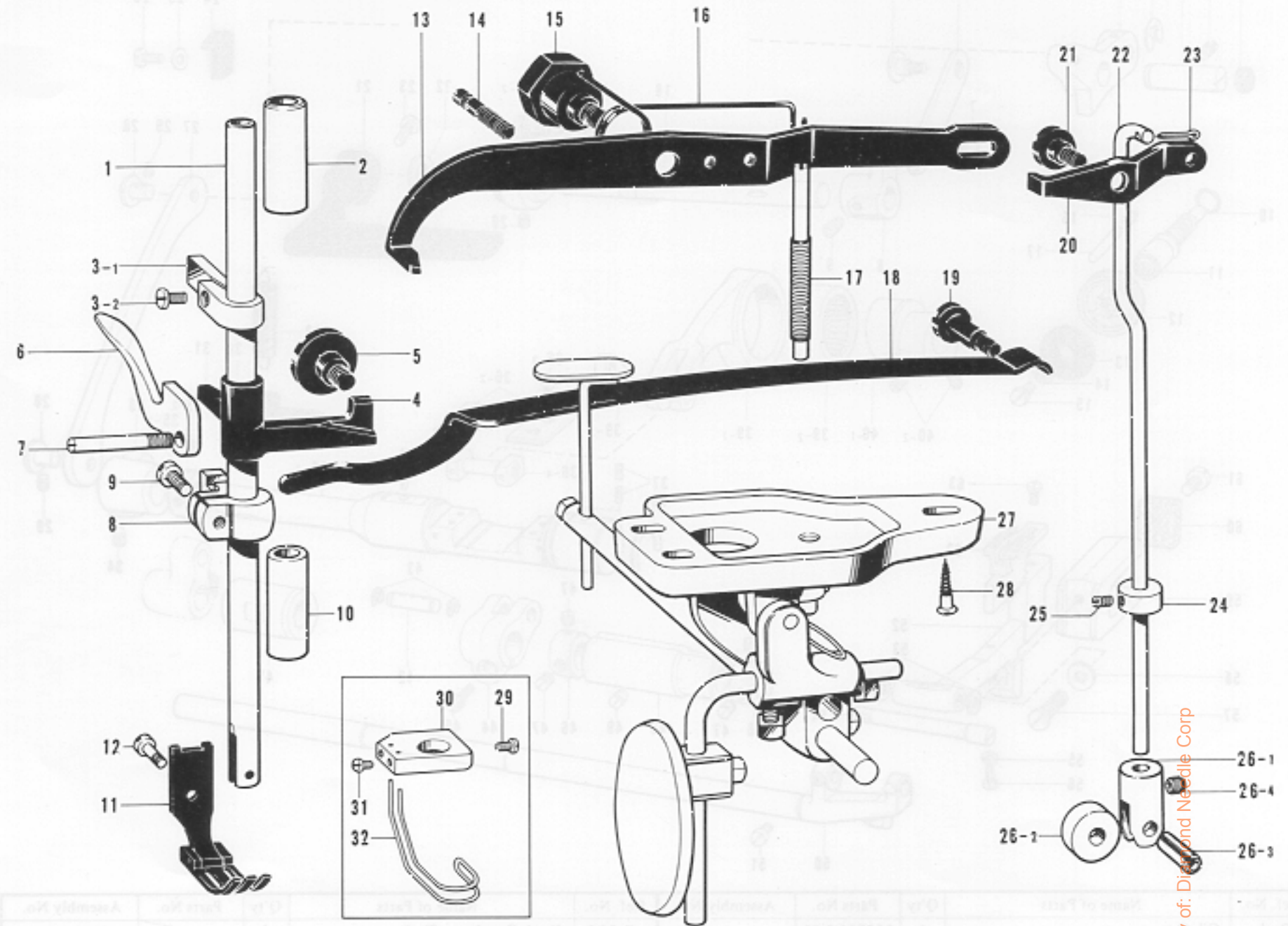
B. Upper Shaft and Needle Bar Rock Mechanism



Ref. No.	Name of Parts	Q'ty	Parts No.	Assembly No.	Ref. No.	Name of Parts	Q'ty	Parts No.	Assembly No.
B-1	Stud	1	155444-0-01		B-31	Screw 6.35	1	105351-0-02	
B-2	Screw 5.95	2	151605-0-01		B-32	Needle Bar Rock Shaft Bushing (Right)	1	112764-0-01	
B-3	Thread Take-up Lever	1	156485-0-01		B-33	Needle Bar Rock Link Stud	2	112597-0-01	
B-4	Wick	1	150995-0-00		B-34	Needle Bar Rock Link	1	112596-0-01	
B-5	Pusher	1	113024-0-00		B-35-1	Needle Bar	1	148597-0-01	
B-6	Wick	1	114693-0-01		B-35-2	Needle Bar Clamp	1	112592-0-01	
B-7	Thread Take-up Lever Slide Block	1	150899-0-01		B-35-3	Screw 3.57 x 8	1	009670-8-12	
B-8	Screw 7.14	1	100250-0-01		B-35-4	Needle Bar Crank Rod	1	112593-0-01	B-35
B-9	Counter Weight	1	112574-0-00		B-35-5	Needle Bar Guide Slide Block	1	112721-0-01	Needle Bar Rock Shaft Assembly
B-10	Screw 7.14	1	146141-0-01		B-35-6	Needle Bar Support	1	148596-1-00	148595-1-01
B-11	Needle Bar Crank	1	112577-0-01		B-35-7	Needle Bar Guide Plate	2	112590-0-01	
B-12	Pusher	1	113014-0-00		B-35-8	Screw 2.38	4	102731-0-04	
B-13	Wick	1	112735-0-00		B-35-9	Pin Taper	1	107030-0-01	
B-14	Screw 6.35	1	101706-0-01		B-35-10	Needle Bar Rock Shaft	1		
B-15	Screw 6.35	1	100251-0-01		B-36	Wick Presser (Lower)	1	112720-0-01	
B-16	Thrust Ring	1	112576-0-01		B-37	Wick	1	116699-0-00	
B-17	Upper Shaft Bushing (Left)	1	112573-0-01		B-38	Wick Presser (Upper)	1	112719-0-01	
B-18	Felt	1	112734-0-01		B-39	Felt	1	149834-0-00	
B-19	Upper Shaft	1	112572-0-01		B-40	Screw 3.57	2	116323-0-01	
B-20	Upper Shaft Bushing (Center)	1	114680-0-01		B-41	Needle Clamp 1/4 inch	1	112600-0-01	
B-21	Felt	1	100248-0-01		B-42	Needle DP x 5	2		
B-22	Timing Belt	1	112586-0-01		B-43	Screw 2.38	1	105288-0-01	
B-23-1	Timing Belt Wheel (Upper)	1		B-23 Timing Belt Wheel Upper Assembly 180157-0-01	B-44	Needle Bar Indicator	1	148598-0-01	
B-23-2	Side Ring	2			B-45	Wick	1	150825-0-01	
B-24	Screw 6.35 x 12	1	015771-2-12		B-46	Needle Bar Rock Shaft Bushing (Left)	1	112594-0-01	
B-25	Screw 5.95	2	013761-4-10		B-47	Screw 6.35 x 18	1	009781-8-12	
B-26	Pulley	1	144614-0-01		B-48	Needle Bar Connecting Crank	1	112598-0-01	
B-27	Screw 6.35 x 12	1	013771-2-12		B-49	Nut 7.94	2	101268-0-03	
B-28	Stop Ring C	1	112760-0-01		B-50	Screw 3.57 x 5	1	009670-5-12	
B-29	Bearing 6204 VV	1	072620-4-60		B-51	Wick Supporter	1	112739-0-01	
B-30	Needle Bar Connecting Rod	1	112595-0-00						

From the library of: Diamond Needle Corp

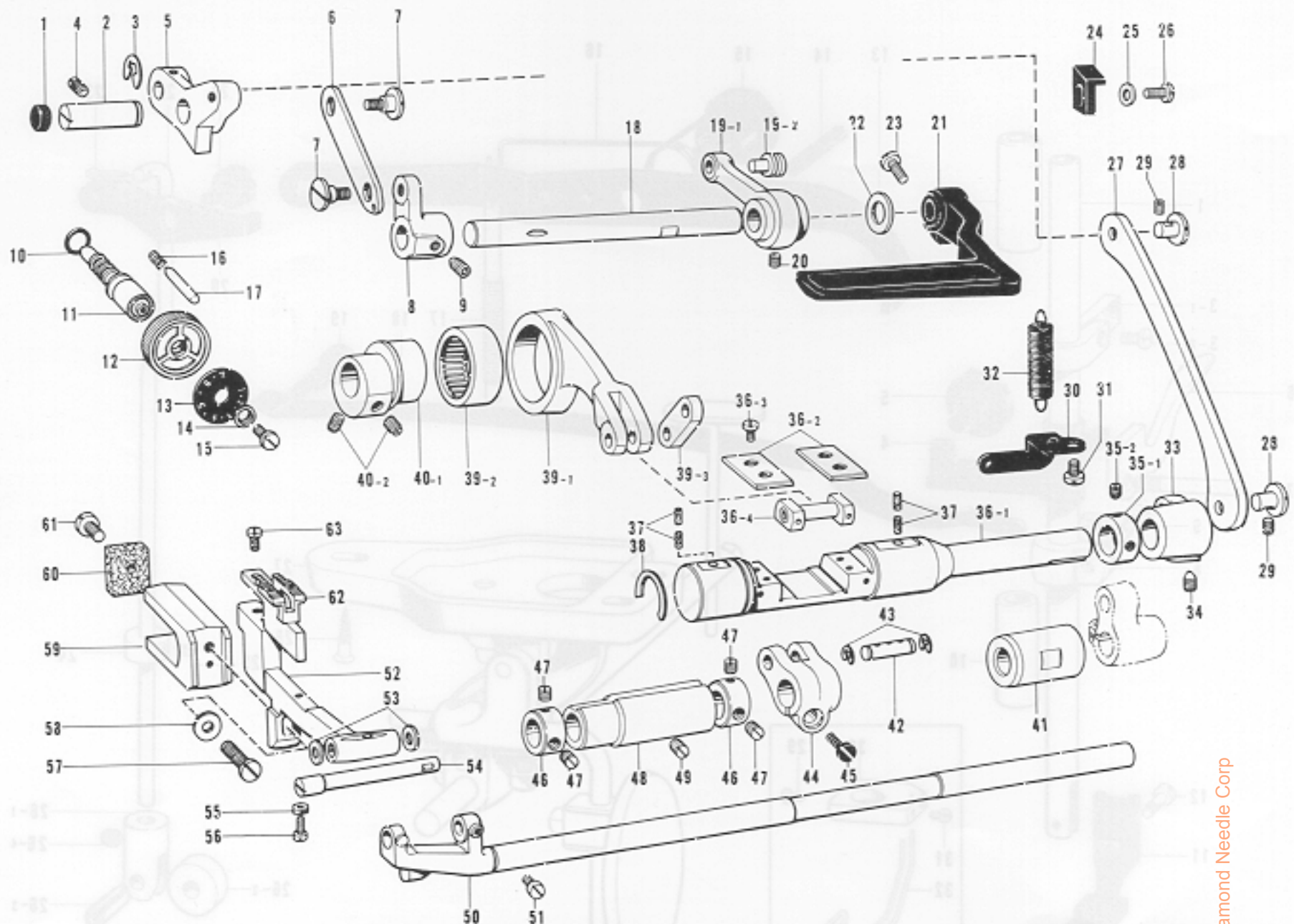
C. Presser Foot Mechanism



Ref. No.	Name of Parts	Q'ty	Parts No.	Assembly No.	Ref. No.	Name of Parts	Q'ty	Parts No.	Assembly No.
C- 1	Presser Bar	1	112614-0-01		C-18	Presser Plate Spring	1	118170-1-01	
C- 2	Presser Bar Bushing (Upper)	1	112615-0-01		C-19	Screw 6.35	1	112623-0-01	
C- 3-1	Presser Bar Guide	1		C-3 Presser Bar Guide Assembly 180950-0-01	C-20	Knee Lifter Connecting Lever	1	155505-0-01	
C- 3-2	Screw 4.37 x 7	1	009680-7-12		C-21	Screw 6.35	1	112628-0-01	
C- 4	Presser Bar Lifter	1	148483-0-01		C-22	Knee Lifter Connecting Rod	1	155447-0-01	
C- 5	Presser Bar Lifter Guide	1	112631-0-01		C-23	Pin	1	114909-0-00	
C- 6	Presser Foot Lifter	1	112618-0-01		C-24	Collar	1	142706-0-01	
C- 7	Screw	1	112619-0-01		C-25	Screw 3.57	1	100128-0-04	
C- 8	Presser Bar Bracket	1	112616-0-01		C-26-1	Roller Bracket	1		C-25 Roller Bracket Assembly 156824-0-01
C- 9	Screw 3.57 x 8	1	009670-8-12		C-26-2	Roller	1	112636-0-01	
C-10	Presser Bar Bushing (Lower)	1	112763-0-01		C-26-3	Spring Pin AWS	1	047501-2-42	
C-11	Presser Foot 1/4 inch	1	155453-0-01		C-26-4	Screw 4.37	1	151601-0-02	
C-12	Screw 3.57	1	113050-0-01		C-27	Knee Lifter Assembly	1	151098-0-01	
C-13	Knee Lifter Lever	1	112625-0-01		C-28	Screw 6.2 x 32	3	106030-0-01	
C-14	Stopper Screw	1	112630-0-01		C-29	Screw 3.57	1	144458-0-01	
C-15	Screw 6.35	1	112626-0-01		C-30	Finger Guard Supporter	1	151191-0-01	
C-16	Spring	1	112629-0-01		C-31	Screw	2	149177-0-01	
C-17	Presser Adjusting Screw	1	112624-0-01		C-32	Finger Guard	1	150917-0-01	

D. Feed Mechanism

C. Presser Foot Mechanism

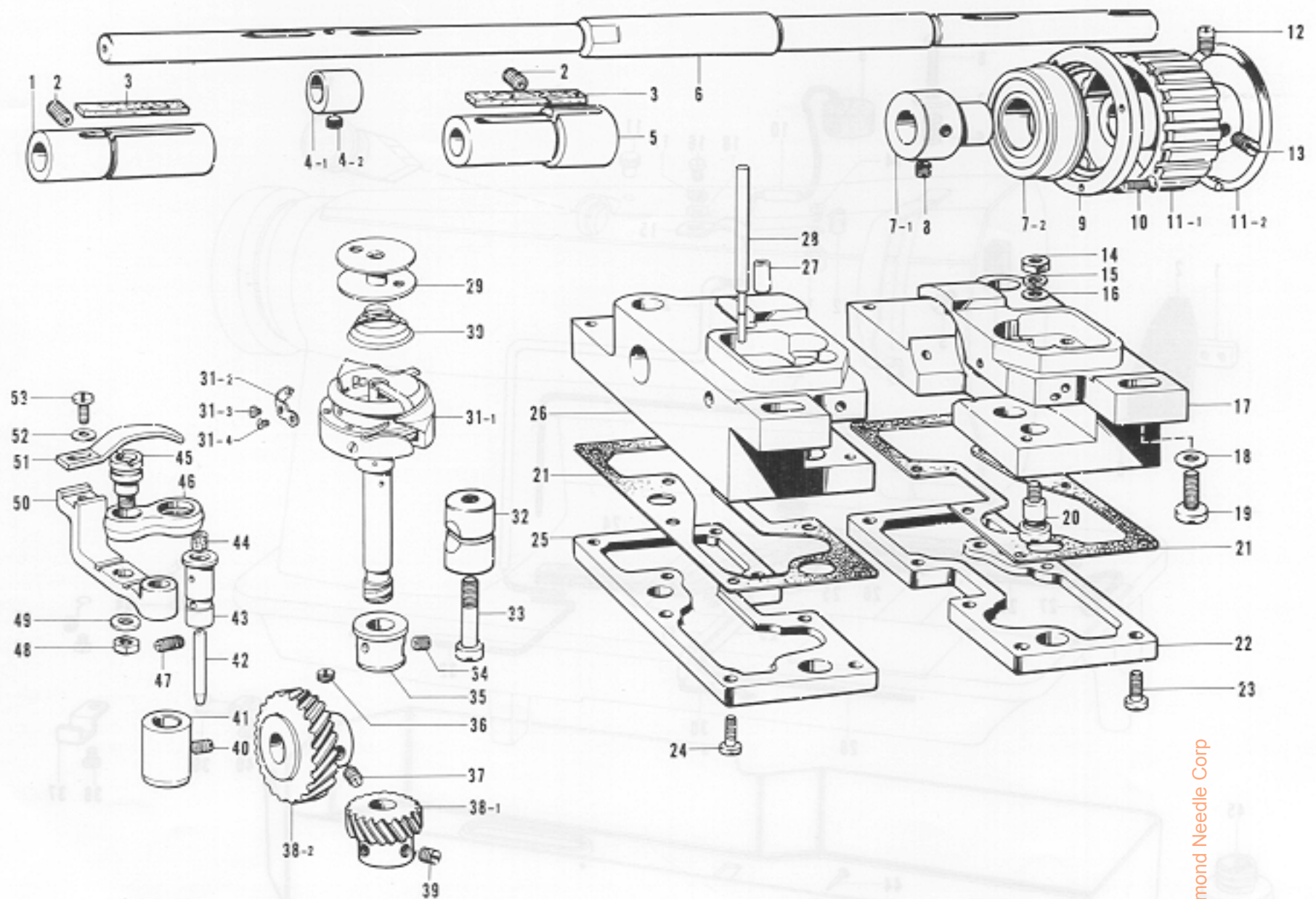


Ref. No.	Name of Parts	Q'ty	Parts No.	Assembly No.	Ref. No.	Name of Parts	Q'ty	Parts No.	Assembly No.
D- 1	Oil Cap	1	143766-0-01		D-36-1	Feed Regulator Shaft	1		D-36
D- 2	Feed Regulator Stud	1	148488-0-01		D-36-2	Guide Plate	2	143594-0-01	Feed Regulator
D- 3	Stop Ring 7	1	048070-3-42		D-36-3	Screw 4.37 x 10	4	009681-0-12	Shaft
D- 4	Screw 5.95	1	151605-0-01		D-36-4	Slide Block	1	145328-0-01	Assembly
D- 5	Feed Regulator	1	148489-0-01		D-37	Felt	4	148743-0-01	148741-0-01
D- 6	Connecting Plate	1	118746-0-01		D-38	Stop Ring	1	143597-0-01	
D- 7	Screw 4.37	2	112072-0-01		D-39-1	Level Feed Connecting Rod	1	150927-0-00	D-39 Level Feed
D- 8	Lever	1	118747-0-01		D-39-2	Needle Bearing	1	118954-0-00	Connecting Rod
D- 9	Screw 5.95	1	118853-0-01		D-39-3	Level Feed Connecting Link	1	143613-0-01	Assembly
D-10	Packing	1	108549-0-01						150926-0-01
D-11	Length Control Screw	1	143598-0-01		D-40-1	Eccentric Wheel	1		D-40
D-12	Length Control Dial	1	153168-0-01						Eccentric Wheel
D-13	Length Control Plate	1	154792-0-01		D-40-2	Screw 5.95	2	151605-0-01	with Screw
D-14	Washer	1	142746-0-02						155451-0-01
D-15	Screw 4.76	1	142747-0-02		D-41	Feed Rock Shaft Bushing (Right)	1	148493-0-01	
D-16	Spring	1	100328-0-01		D-42	Stud	1	143616-0-01	
D-17	Pin	1	145502-0-01		D-43	Stop Ring E6	2	048060-3-42	
D-18	Feed Regulator Lever Shaft	1	155450-0-01		D-44	Level Feed Arm	1	150930-0-01	
D-19-1	Link B	1		D-19 Link Assembly 143608-0-01	D-45	Screw 6.35 x 18	1	009781-8-12	
D-19-2	Spring Hook	1	108546-0-01		D-46	Feed Rock Shaft Collar	2	113074-0-01	
D-20	Screw 5.95 x 6	1	014760-6-22		D-47	Screw 6.35	4	101706-0-01	
D-21	Reverse Lever	1	147503-0-01		D-48	Feed Rock Shaft Bushing (Left)	1	148494-0-01	
D-22	Spacer	1	156070-0-01		D-49	Screw 5.95	1	013761-4-10	
D-23	Screw 4.76 x 14	1	009711-4-12		D-50	Feed Rock Shaft	1	149001-0-01	
D-24	Reverse Lever Stopper	1	149282-0-01		D-51	Screw 4.37	1	104908-0-04	
D-25	Washer	1	100645-0-03		D-52	Feed Bar	1	151081-0-01	
D-26	Screw 4.37 x 10	1	009681-0-12		D-53	Thrust Ring	2	143591-0-01	
D-27	Feed Regulator Connecting Link	1	155448-0-01		D-54	Feed Bar Shaft	1	148977-0-01	
D-28	Pin	2	118713-0-01		D-55	Nut 3.18	1	021660-1-03	
D-29	Screw 4.37	2	151602-0-01		D-56	Screw 3.18	1	107278-0-02	
D-30	Spring Hook Plate	1	143610-0-01		D-57	Screw 5.95 x 14	1	009761-4-12	
D-31	Screw 4.76 x 8	1	009710-8-12		D-58	Washer 6	1	025060-1-32	
D-32	Spring	1	143609-0-01		D-59	Feed Bar Fork	1	150958-0-01	
D-33	Feed Regulator Arm	1	155449-0-01		D-60	Felt	1	112759-0-01	
D-34	Screw 5.95	1	118853-0-01		D-61	Screw 3.57	1	100242-0-03	
D-35-1	Collar	1		D-35 Collar Assembly 180321-0-01	D-62	Feed Dog 1/4 inch	1	112660-0-01	
D-35-2	Screw 6.35	2	101706-0-01		D-63	Screw 3.18	2	116283-0-01	

From the library of: Diamond Needle Corp

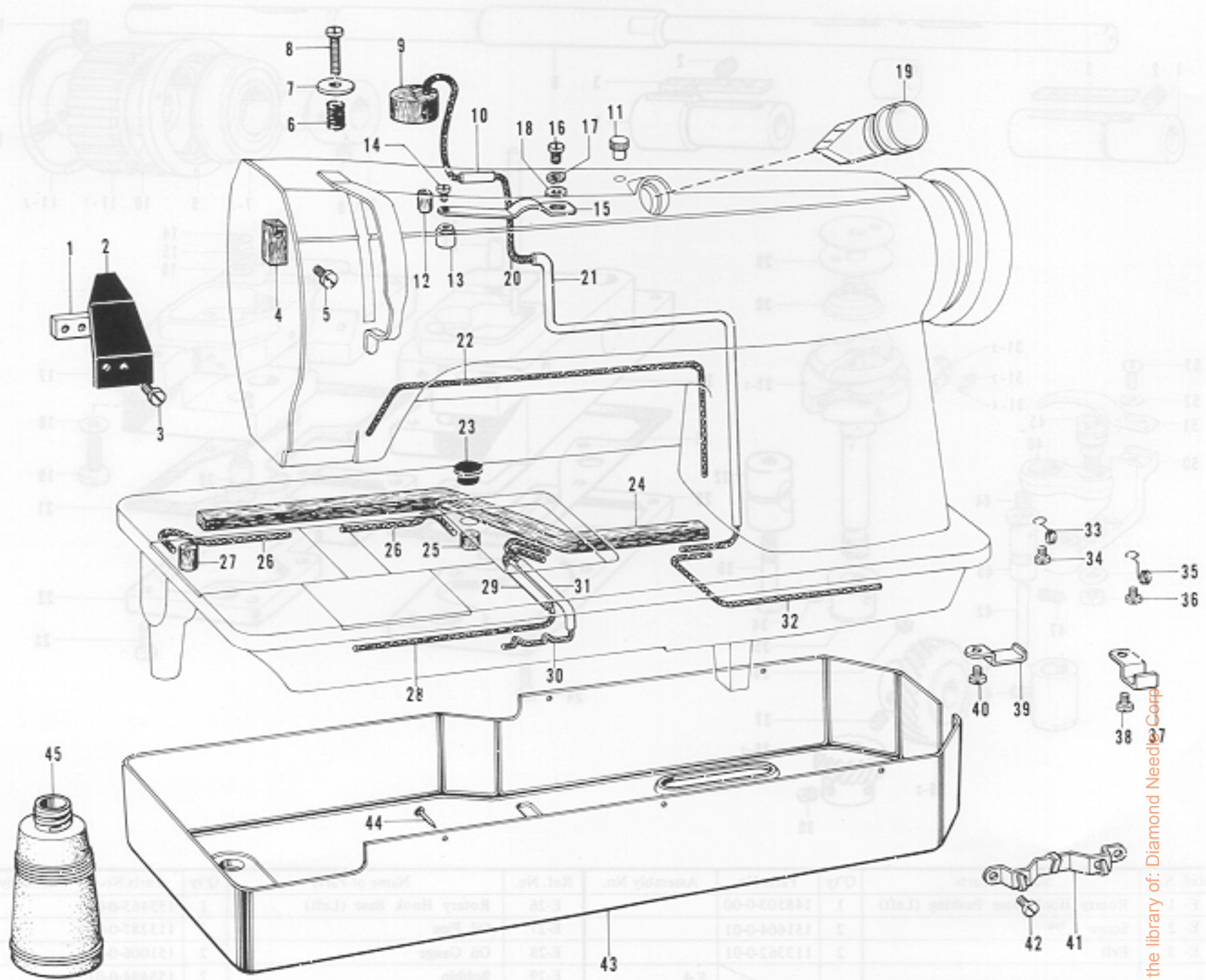
E. Lower Shaft and Rotary Hook Mechanism

From the library of Diamond Needle Corp



Ref. No.	Name of Parts	Q'ty	Parts No.	Assembly No.	Ref. No.	Name of Parts	Q'ty	Parts No.	Assembly No.
E-1	Rotary Hook Base Bushing (Left)	1	148503-0-00		E-26	Rotary Hook Base (Left)	1	155465-0-01	
E-2	Screw 5.95	2	151604-0-01		E-27	Oil Pipe	2	115287-0-00	
E-3	Felt	2	113362-0-01		E-28	Oil Gauge	2	151006-0-01	
E-4-1	Vertical Feed Eccentric Wheel	1		E-4 Vertical Feed Eccentric Wheel Assembly 181486-0-01	E-29	Bobbin	2	155484-0-01	
E-4-2	Screw 6.35	1	112684-0-01		E-30	Spring	2	156557-0-01	
E-5	Rotary Hook Base Bushing (Right)	1	148502-0-00		E-31-1	Rotary Hook	2		E-31 Rotary Hook Assembly 156514-0-01
E-6	Lower Shaft	1	151082-0-01		E-31-2	Tension Adjusting Spring	2	156521-0-01	
E-7-1	Bushing	1	112667-0-00	E-7 Bearing Holder Assembly 112698-0-01	E-31-3	Tension Adjusting Screw	2	151029-0-01	
E-7-2	Ball Bearing	1	112666-0-01		E-31-4	Screw	2	156522-0-01	
E-8	Screw 6.35 x 7	2	013780-7-10		E-32	Pinch Sleeve	2	112699-0-01	
E-9	Presser	1	112668-0-01		E-33	Screw 5.95	2	112700-0-01	
E-10	Screw 3.57 x 12	3	005671-2-12		E-34	Screw 4.76	2	107794-0-01	
E-11-1	Timing Belt Wheel (Lower)	1		E-11 Timing Belt Wheel Lower Assembly 180164-0-01	E-35	Rotary Hook Shaft Bushing (Upper)	2	150964-1-01	
E-11-2	Ring	1			E-36	Screw 6.35	2	112684-0-01	
E-12	Screw 6.35 x 12	1	015771-2-12		E-37	Screw 6.35	4	100251-0-01	
E-13	Screw 6.35 x 12	1	013771-2-12		E-38-1	Pinion	2		E-38 Spiral Gear Assembly 180949-0-01
E-14	Nut 4.37	2	105234-0-01		E-38-2	Spiral Gear	2		
E-15	Washer 2-4.37	2	028680-2-43		E-39	Screw 6.35	6	101706-0-01	
E-16	Washer	2	100645-0-03		E-40	Screw 4.76	2	107794-0-01	
E-17	Rotary Hook Base (Right)	1	155483-0-01		E-41	Rotary Hook Shaft Bushing (Lower)	2	150965-0-01	
E-18	Washer	2	100197-0-02		E-42	Pipe	1	112696-0-00	
E-19	Screw 6.35	2	105351-0-02		E-43	Opener Lever Stud	2	150969-0-01	
E-20	Oil Adjusting Screw	2	112756-0-01		E-44	Felt	2	107155-0-01	
E-21	Packing	2	112755-0-01		E-45	Stud	2	148005-0-01	
E-22	Rotary Hook Base Oil Reservoir (Right)	1	112702-0-01		E-46	Opener Link	2	150967-0-01	
E-23	Screw 4.76	8	100320-0-02		E-47	Screw 4.76	2	153483-0-01	
E-24	Screw 4.76	8	100320-0-02		E-48	Nut 4.76	2	110161-0-06	
E-25	Oil Reservoir (Left)	1	112686-0-01		E-49	Washer 4.76	2	025710-2-32	
					E-50	Opener Lever	2	150968-0-01	
					E-51	Bobbin Case Opener	2	155482-0-01	
					E-52	Washer	2	105161-0-02	
					E-53	Screw 3.57 x 8	2	009670-8-12	

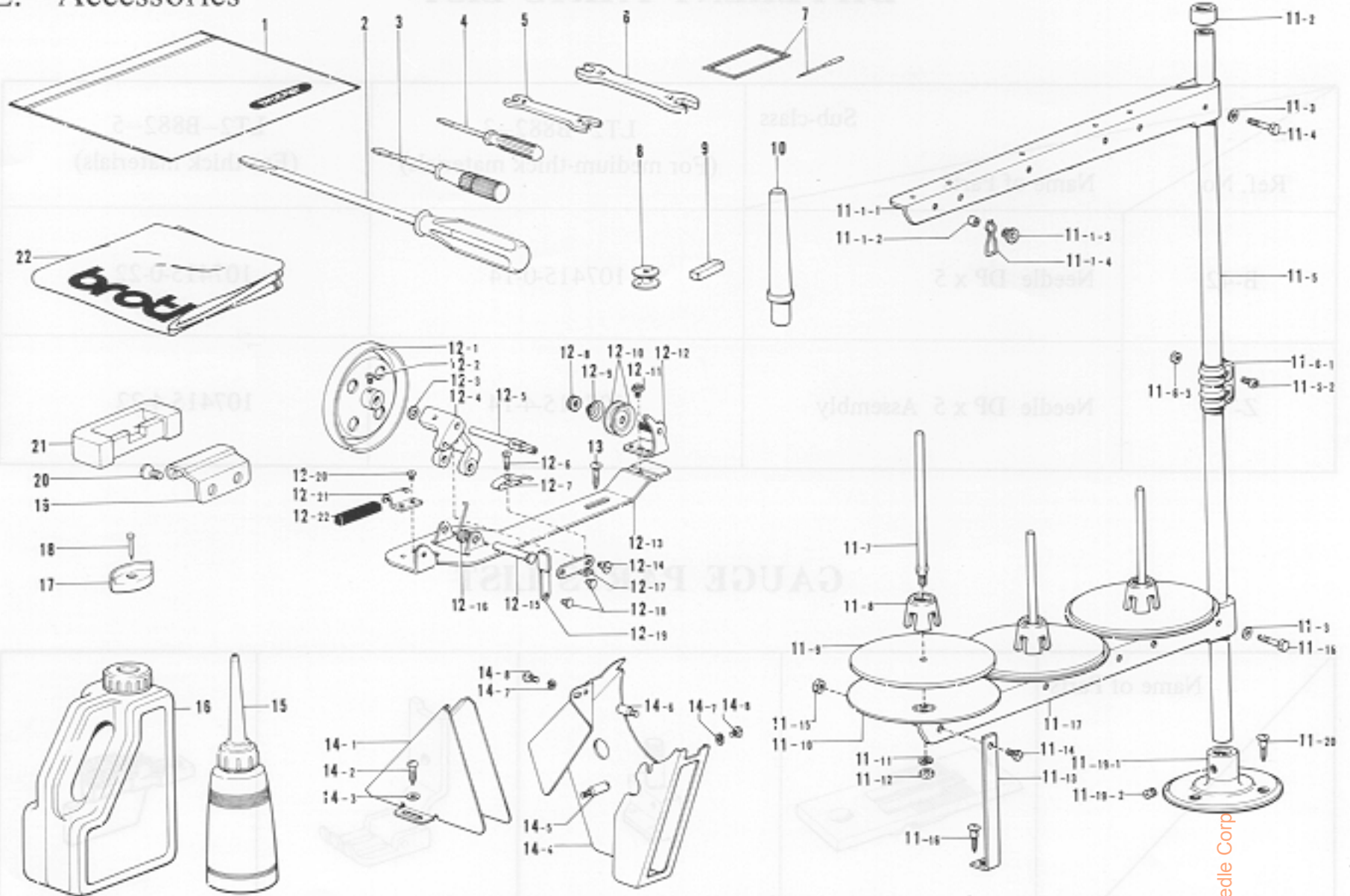
F. Lubrication



From the library of: Diamond Needle Corp.

Ref. No.	Name of Parts	Q'ty	Parts No.	Assembly No.	Ref. No.	Name of Parts	Q'ty	Parts No.	Assembly No.
F-1	Oil Stopper Plate Presser	1	112717-0-01		F-24	Felt	1	155486-0-01	
F-2	Oil Stopper Plate	1	112716-0-01		F-25	Felt	1	112753-0-01	
F-3	Screw 4.76 x 8	1	009710-8-12		F-26	Wick	2	155488-0-00	
F-4	Felt	1	148762-0-01		F-27	Felt	1	112754-0-01	
F-5	Screw 3.57 x 6	1	001670-6-12		F-28	Wick	1	112738-0-00	
F-6	Spring	1	155485-0-01		F-29	Oil Tube	1	143671-0-00	
F-7	Washer	1	116662-0-03		F-30	Wick 4 x 4	1	152956-0-01	
F-8	Screw 4.76 x 16	1	009711-6-12		F-31	Oil Tube	1	148733-0-01	
F-9	Felt (A)	1	141742-0-01		F-32	Wick	1	155489-0-00	
F-10	Oil Tube	1	150997-0-00		F-33	Tube Holder	1	112743-0-01	
F-11	Cap for Oil Inlet	1	113526-0-01		F-34	Screw 3.57 x 5	1	009670-5-12	
F-12	Felt	1	112754-0-01		F-35	Tube Holder	1	112744-0-01	
F-13	Oil Pendulum	1	150994-0-00		F-36	Screw 3.57 x 5	1	009670-5-12	
F-14	Screw 3.57 x 6	1	009670-6-12		F-37	Felt Presser	4	155487-0-01	
F-15	Spring	1	150993-0-01		F-38	Screw 3.57 x 5	4	009670-5-12	
F-16	Screw 4.37 x 6	1	009680-6-12		F-39	Felt Presser	1	114297-0-01	
F-17	Washer 2-4.37	1	028680-2-43		F-40	Screw 3.57 x 5	1	009670-5-12	
F-18	Washer 4.37	1	025680-2-32		F-41	Wick Support	1	143673-0-01	
F-19	Oil Gauge Window	1	150990-0-01		F-42	Screw 3.18 x 4	2	009660-4-12	
F-20	Wick	1	112738-0-00		F-43	Oil Pan	1	151007-1-01	
F-21	Oil Tube	1	112737-0-01		F-44	Nail	5	109714-0-00	
F-22	Wick	1	112736-0-00		F-45	Oiler	1	114486-0-01	
F-23	Oil Cap	1	112758-0-01						

Z. Accessories



Ref. No.	Name of Parts	Q'ty	Parts No.	Assembly No.	Ref. No.	Name of Parts	Q'ty	Parts No.	Assembly No.
Z- 1	Vinyl Bag		122991-0-01		Z-12- 2	Screw 4.37 x 5		100366-0-02	
Z- 2	Screw Driver 5.5 x 190		101572-1-01		Z-12- 3	Washer			
Z- 3	Screw Driver 3.4 x 70		118837-0-01		Z-12- 4	Bobbin Winder Wheel Shaft Supporter			
Z- 4	Screw Driver 1.9 x 52		142443-0-01		Z-12- 5	Bobbin Winder Shaft		117970-0-01	
Z- 5	Spanner 8 x 9		100887-0-01		Z-12- 6	Screw 3.18		100657-0-01	
Z- 6	Spanner 10 x 12		107780-0-01		Z-12- 7	Bobbin Presser		100656-0-01	
Z- 7	Needle DP x 5 Assembly				Z-12- 8	Tension Control Nut			
Z- 8	Bobbin		155484-0-01		Z-12- 9	Tension Spring		100401-0-01	
Z- 9	Felt		114941-0-01		Z-12-10	Tension Disc		145445-0-01	Z-12
Z-10	Head Rest		100477-0-01		Z-12-11	Screw 4.37			Bobbin Winder
Z-11- 1-1	Spool Holder 3			Z-11-1	Z-12-12	Bobbin Winder Guide Assembly			Assembly
Z-11- 1-2	Thread Bushing		142990-0-01	Thread Hanger	Z-12-13	Bobbin Winder Wheel Bracket			Assembly
Z-11- 1-3	Thread Hanger			Assembly 3	Z-12-14	Screw 3.18		100559-0-01	117963-0-01
Z-11- 1-4	Thread Guide Spring		150184-0-01	150193-0-03	Z-12-15	Pin			
Z-11- 2	Cap				Z-12-16	Spring		117969-0-01	
Z-11- 3	Washer 5		025050-2-33		Z-12-17	Bobbin Presser Arm			
Z-11- 4	Bolt 5 x 28		017502-8-03		Z-12-18	Pin			
Z-11- 5	Pipe		150172-0-01		Z-12-19	Bobbin Presser Bracket			
Z-11- 6-1	Joint			Z-11-6	Z-12-20	Screw 3.57 x 3.5		009679-3-12	
Z-11- 6-2	Screw 5 x 14		150202-0-01	Joint for	Z-12-21	Bobbin Winder Wheel Stopper Holder			
Z-11- 6-3	Nut 5		021500-1-03	Cotton Stand	Z-12-22	Bobbin Winder Wheel Stopper		100662-0-01	
Z-11- 7	Spool Shaft (B)		150179-0-01	150106-0-01	Z-13	Screw 5.5 x 20		100666-0-02	
Z-11- 8	Spool Cushion		126863-0-00		Z-14- 1	Belt Cover (D)			
Z-11- 9	Spool Mat		150182-0-00		Z-14- 2	Screw 5.5 x 20		100666-0-02	
Z-11-10	Spool Stand Base		150180-0-00		Z-14- 3	Washer 5.56		025750-1-32	Z-14
Z-11-11	Washer 2-5		028050-2-43	Z-11	Z-14- 4	Belt Cover UD			Belt Cover
Z-11-12	Nut 5		021500-1-03	Cotton Stand	Z-14- 5	Belt Cover STUD (B)		147856-0-02	Complete D
Z-11-13	Spool Holder Supporter (A)		150188-0-01	Assembly 3	Z-14- 6	Belt Cover Stud (D)		147858-0-01	147908-0-01
Z-11-14	Screw 5 x 10		007501-0-03	150151-0-03	Z-14- 7	Washer 2-4.37		028680-2-42	
Z-11-15	Nut 5		021500-1-03		Z-14- 8	Screw 4.37 x 8		009680-8-12	
Z-11-16	Screw 4.5 x 22		031452-2-03		Z-15	Oiler		114483-0-01	
Z-11-17	Spool Holder 3				Z-16	Oil Tank		154702-0-01	
Z-11-18	Bolt 5 x 28		017502-8-03		Z-17	Head Cushion		143890-1-01	
Z-11-19-1	Bracket		150189-0-01	Z-11-19	Z-18	Nail		109714-0-00	
Z-11-19-2	Screw 6 x 7		150181-1-01	Bracket	Z-19	Head Hinge		148882-0-01	
Z-11-20	Screw 4.5 x 22		031452-2-03	Assembly	Z-20	Screw 6.35		112569-0-01	
Z-12- 1	Bobbin Winder Wheel Assembly		Z-12 117963-0-01	150139-0-01	Z-21	Rubber Hinge		143910-0-01	
					Z-22	Head Cover		144222-0-01	

*The details of included accessories are subject to change.

*Änderungen in der Aufstellung der mitgelieferten Zubehöre sind vorbehalten.

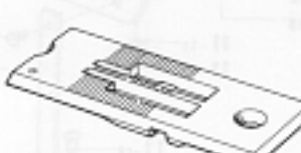


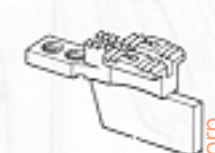
*Les détails des accessoires inclus sont sujets à des changements.

*Los detalles de los accesorios incluidos pueden variar.

DIFFERENT PARTS LIST

Ref. No.	Name of Parts	Sub-class	LT2-B882-3 (For medium-thick materials)	LT2-B882-5 (For thick materials)
B-42	Needle DP x 5		107415-0-14	107415-0-22
Z-7	Needle DP x 5 Assembly		107415-4-14	107415-4-22

GAUGE PARTS LIST

Name of Parts				
Needle Gauge	Needle Plate	Needle Clamp	Presser Foot Assembly	Feed Dog
1/8 inch (3.17 mm)	117369-0-01	114947-0-01	155463-0-01	114951-0-01
5/32 inch (3.96 mm)	150850-0-01	116489-0-01	155455-0-01	116509-0-01
3/16 inch (4.76 mm)	117133-0-01	112599-0-01	155457-0-01	112659-0-01
1/4 inch (6.35 mm)	117367-0-01	112600-0-01	155453-0-01	112660-0-01
5/16 inch (7.93 mm)	144882-0-01	112601-0-01	155459-0-01	112661-0-01
3/8 inch (9.52 mm)	144881-1-01	116491-0-01	155461-0-01	116510-0-01

*For parts of a different gauge size than those listed above, please order from a Brother dealer.

*Zubehörteile, die sich in der Größe von den oben aufgeführten unterscheiden, bei einem Brother-Fachhändler bestellen.

*Pour les pièces d'une taille de jauge différente que celles mentionnées ci-dessus, passer commande chez un représentant Brother.

*Para piezas con un tamaño de calibrador diferente a los que se mencionan en el cuadro anterior, recurrir a un distribuidor Brother.